

AK RON 1100

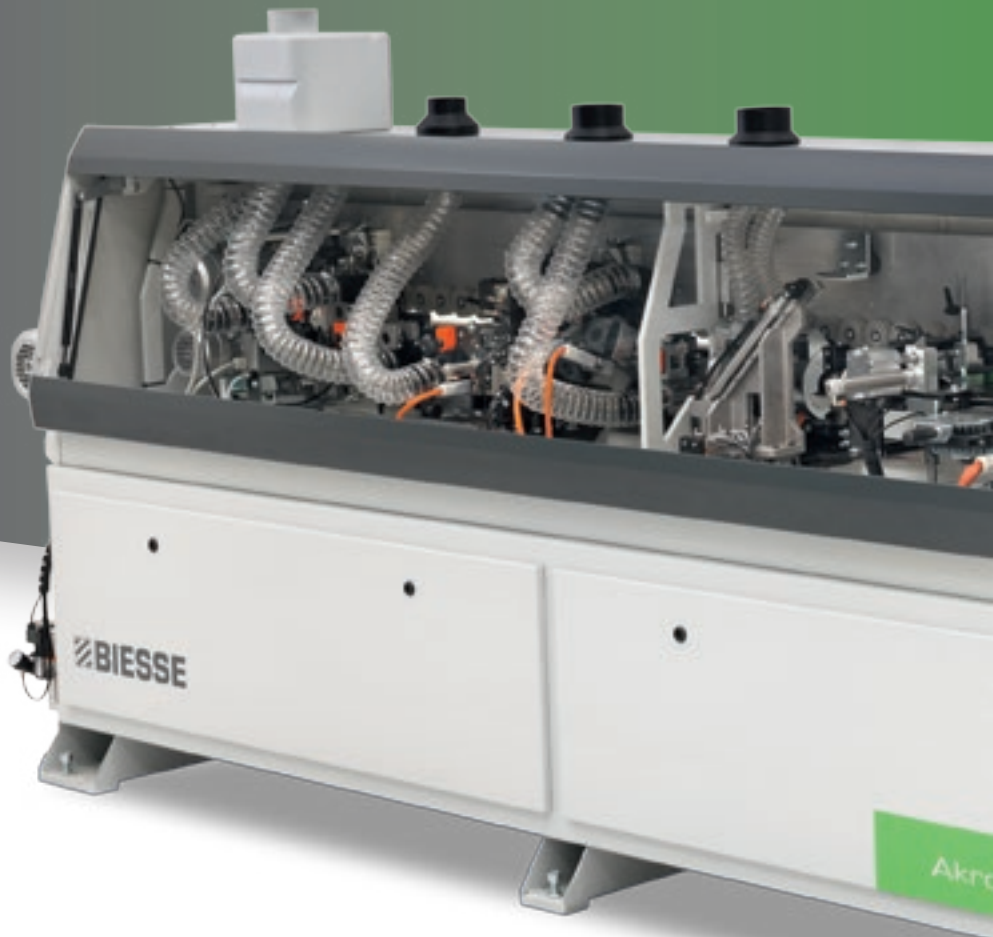
AUTOMATIC SINGLE-SIDED
EDGEBANDING MACHINES



 **BIESSE**

 **50 YEARS**
 **BIESSEGROUP**

SIMPLE, COMPACT, ONE OF ITS KIND



THE MARKET DEMANDS

a change in manufacturing processes that enables companies to accept the **largest possible number of orders**. This is coupled with the need to maintain high quality standards whilst offering product customisation with quick and defined delivery times, as well as responding to the needs of highly creative designers.

BIESSE RESPONDS

with technological solutions that enhance and support the expertise and knowledge of producers. **Akron 1100** is the smallest automatic single-sided edgebanding machine of the range and is the only one of its kind on the market. It's designed for small-scale artisans and companies looking for user-friendliness and optimum quality - common features of all Biesse products.



AKRON 1100

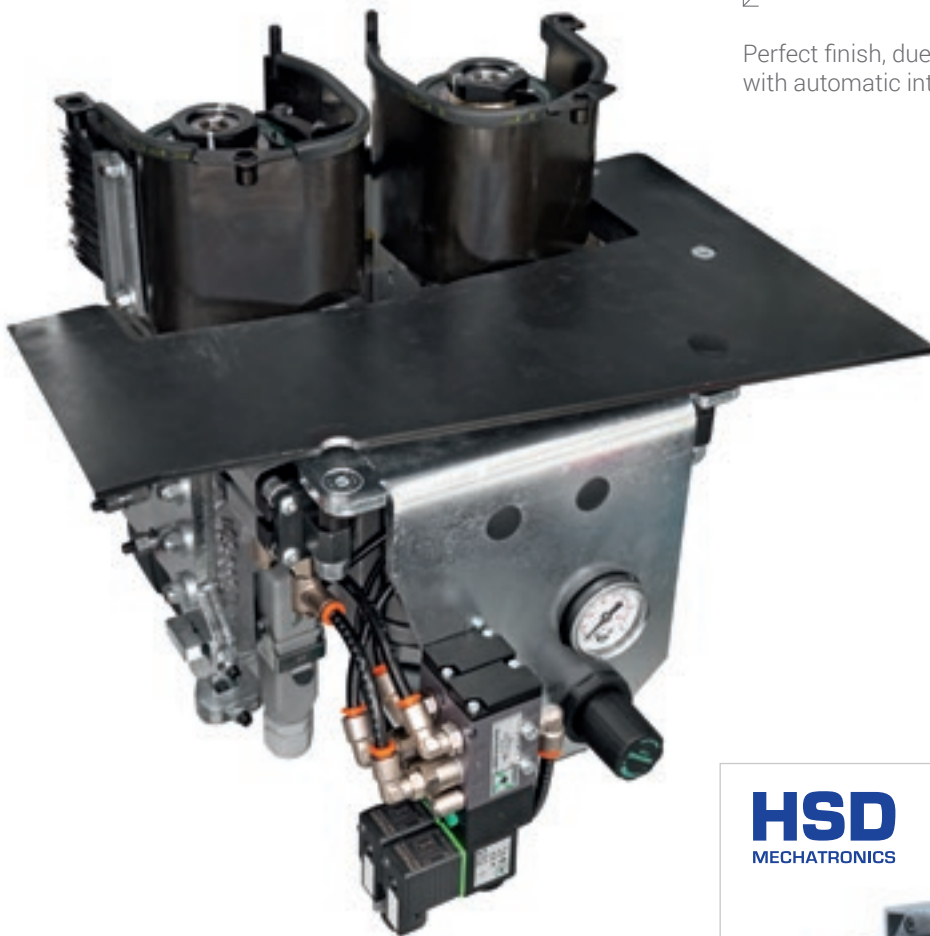
- ✔ OPTIMUM QUALITY, MADE IN BIESSE
- ✔ THE LATEST TECHNOLOGY, AVAILABLE TO EVERYONE
- ✔ DESIGNED WITH UNRIVALLED ATTENTION TO DETAIL
- ✔ EXTREMELY USER-FRIENDLY.

OPTIMUM QUALITY, MADE IN BIESSE

Biesse, focused as always on all-round quality, develops technologies that work to ensure the best possible results on the finished product.



Perfect finish, due to the 2-motor Pre-milling unit with automatic intervention.



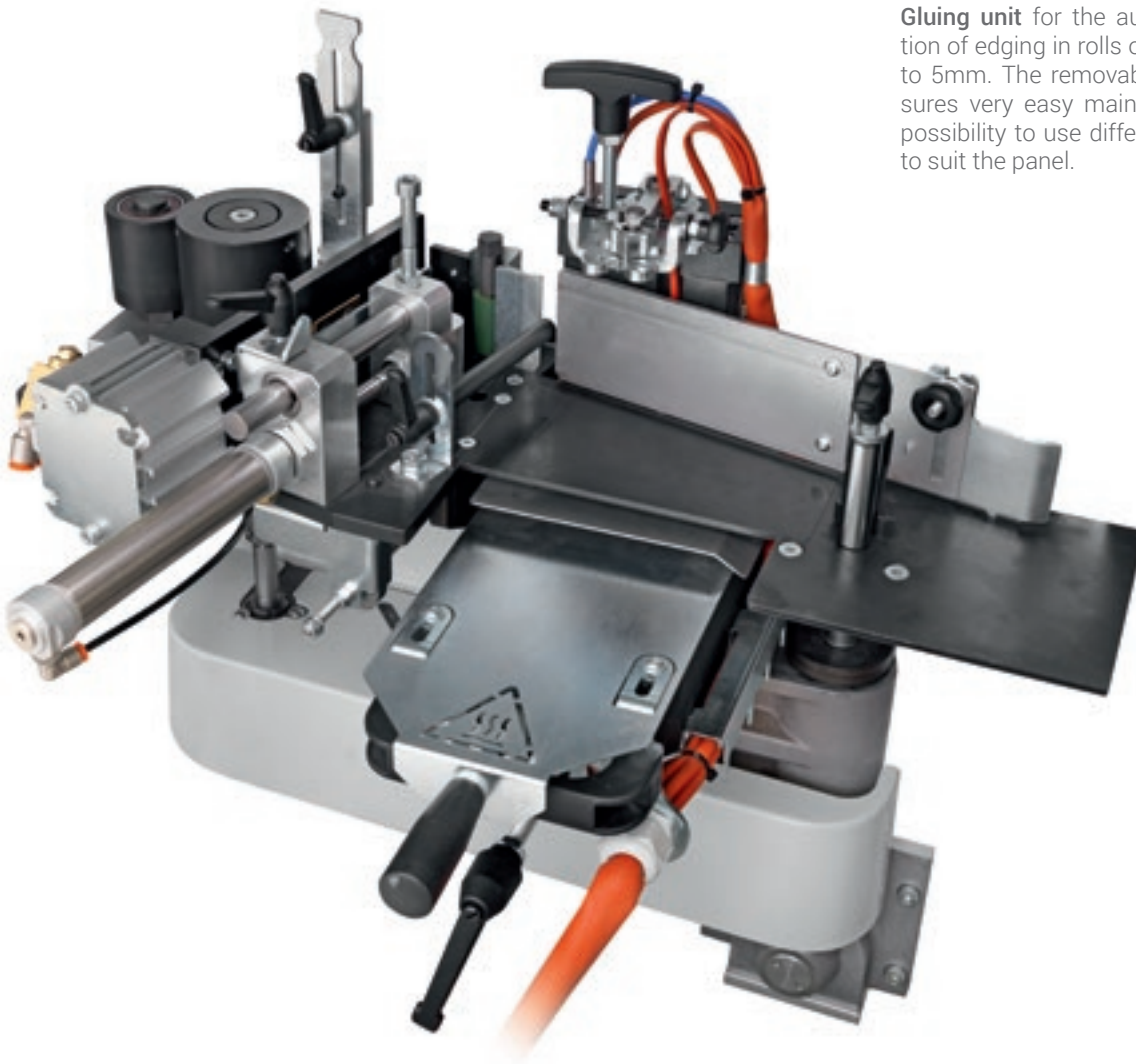
As standard, Akron uses only the electrospindles of the exclusive Rotax range on all the machines. These are electrospindles of the highest quality, designed and made by HSD (a leader in this sector); they guarantee optimum power, compact dimensions, and extremely high finishing standards.

THE LATEST TECHNOLOGY, AVAILABLE TO EVERYONE

Our specific Research & Development team creates pioneering solutions to meet the market requirements and offer cutting edge technology that's reliable and guarantees first class results.



Gluing unit for the automatic application of edging in rolls or strips, from 0.4 to 5mm. The removable glue bowl ensures very easy maintenance and the possibility to use different glue colours to suit the panel.



EDGE BANDING STARTS HERE

**QUALITY HAS NEVER BEEN
THIS SIMPLE.**

The Akron 1100 is the smallest single-sided edgebanding machine in the range, meant for small producers who need to modernise their technology or for woodworkers who wish to automate production.

The machine is equipped with high level components, HSD electrospindles, a 7 inch touch-screen control panel, removable glue bowl, rigid structure, and linear guides that exemplify engineering excellence embodied in a machine.

Akron 1100: Simple, compact, Made in Biesse.



BIESSE

MAXIMUM WORKING PRECISION



Reliability and cutting accuracy, due to the End Trimmer that removes excess edge at the front and rear of the panel.

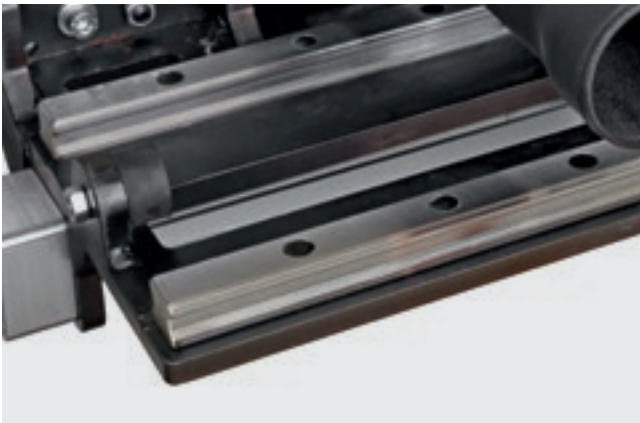
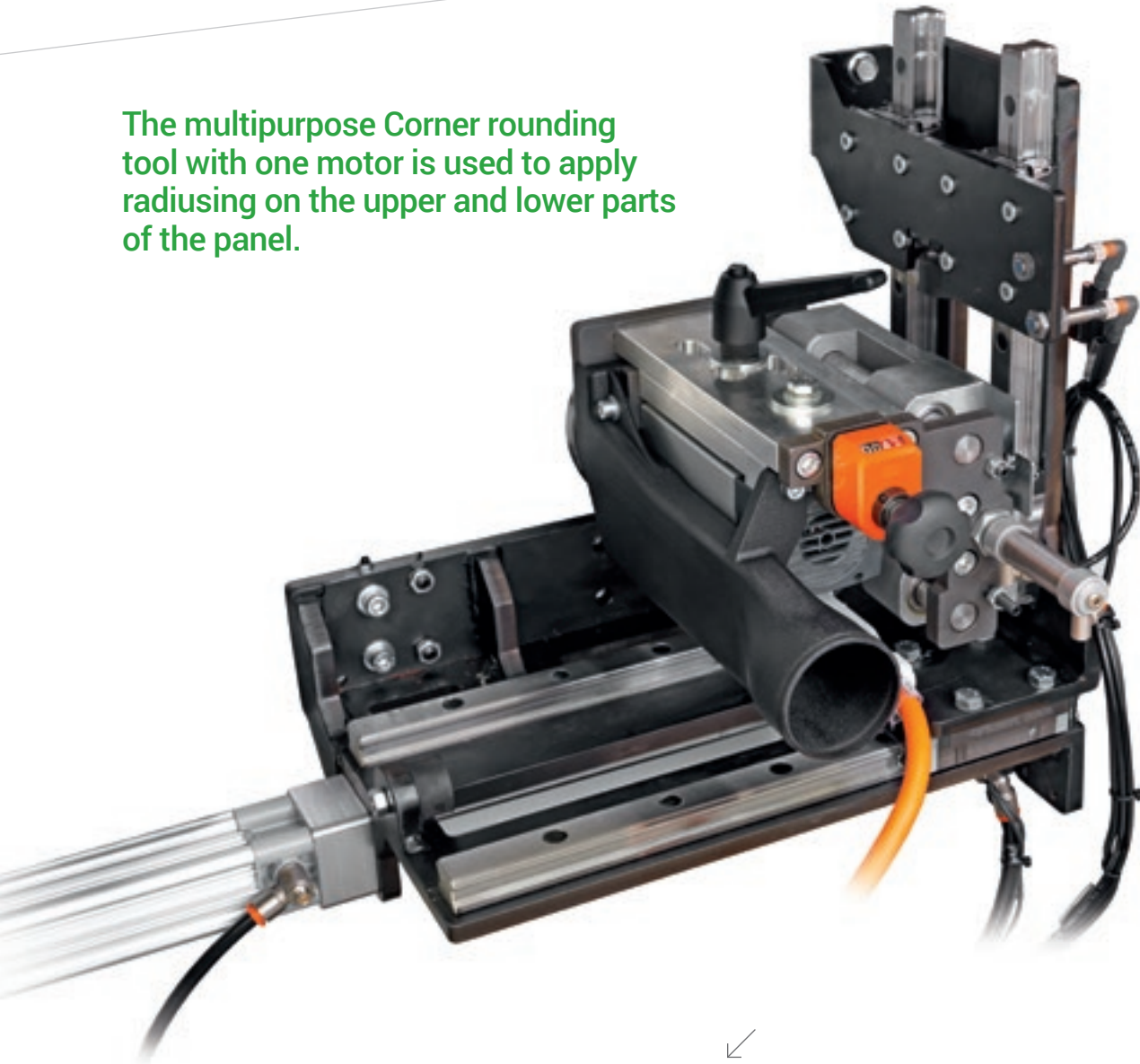
Unprecedented product quality and reduced machining times, thanks to technological solutions created for the specific day-to-day work.



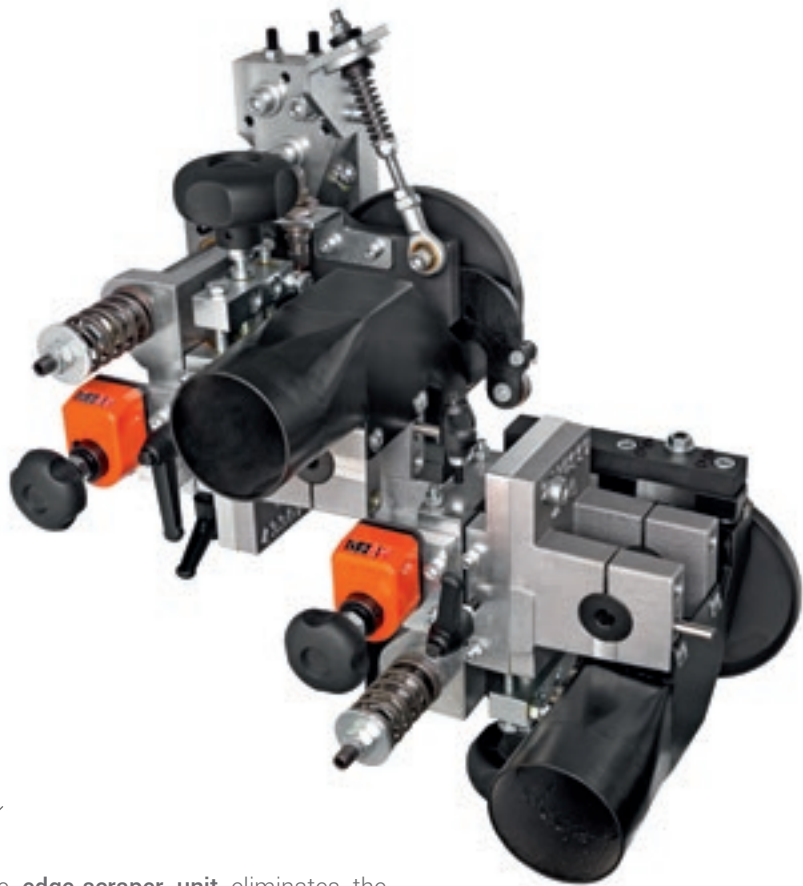
Fine trimming unit for trim cutting the edgebanding strip, complete with 2 high-frequency motors.

HIGH QUALITY PRODUCTS

The multipurpose Corner rounding tool with one motor is used to apply radiusing on the upper and lower parts of the panel.



A rigid structure and linear guides with ball blocks guarantee excellent stability and machining precision over time.



The **edge-scaper unit** eliminates the surplus on the top and bottom of the edgebanding strip, from previous machining operations.

ROTAX ELECTRO SPIND LES

EXCLUSIVE TECHNOLOGY.

Biesse directly designs and manufactures all high-tech components for its machinery.

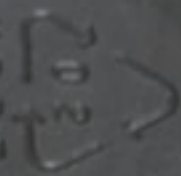
Standard and exclusive on all Biesse edgebanding machines is the Rotax range of electrospindles, which is the same technology used on top range edgebanders and CNC machining centres, guaranteeing optimum power, compact size as well as extremely high quality finishing standards. Designed and manufactured by HSD the world leader in this technology, Rotax electrospindles represent the ultimate in engineering excellence.



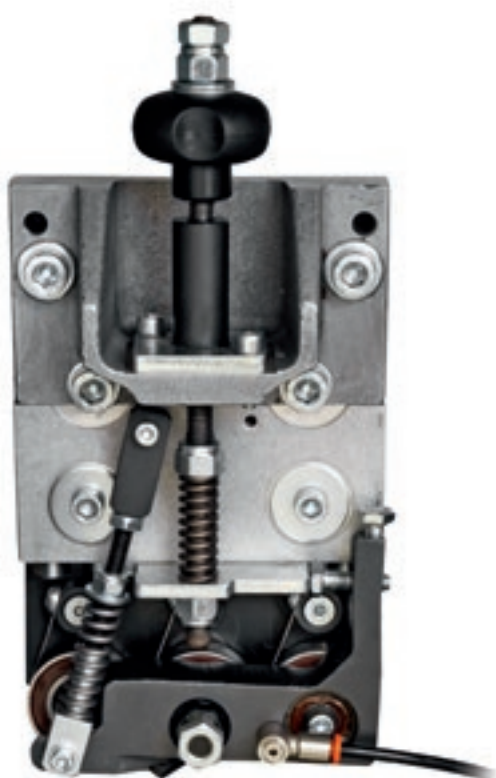
 BIESSE

FNZ8100120

HDPE



PERFECT FINISH ON EVERY TYPE OF MACHINING OPERATION



The **Glue Scraper** removes excess glue from the top and the underside of the panel.



Buffing unit for cleaning and polishing the edge and panel.



The **Grooving Unit** creates grooves and performs milling operations on the underside of the panel.

TECHNOLOGY AT THE SERVICE OF THE USER



Advanced statistics to monitor the productivity levels:

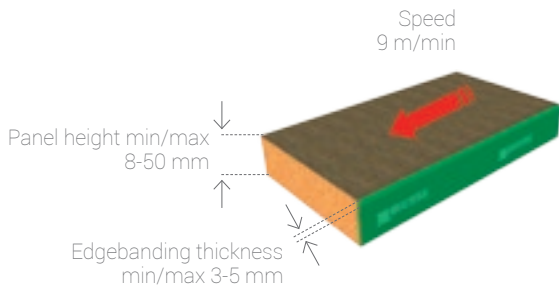
- ▀ productivity parameters always available
- ▀ sub-division of the production statistics into total and partial
- ▀ Sophia Parts for finding and ordering spare parts and keeping up to date with maintenance.



New 7-inch SMART TOUCH control - the only one of its kind on the market.

Simple, instant programming within reach of all users, thanks to the touch screen control panel.

TECHNICAL SPECIFICATIONS



		L
Akron 1110	mm/inch	2570 / 101
Akron 1120	mm/inch	3763 / 148
Akron 1130	mm/inch	4213 / 166

AVAILABLE CONFIGURATIONS

Akron 1110



Akron 1120



Akron 1130



*** EDGE-SCRAPER, BRUSH AND MILLING UNIT configuration not available.**

The technical specifications and drawings are non-binding. Some photos may show machines equipped with optional features. Biesse Spa reserves the right to carry out modifications without prior notice.

A-weighted sound pressure level (LpA) during machining for operator workstation on vane-pump machine LpA=86dB(A) Lwa=106dB(A) A-weighted sound-pressure level (LpA) for operator workstation and sound power level (LwA) during machining on cam-pump machine LpA=86dB(A) Lwa=106dB(A) K measurement uncertainty dB(A) 4.

The measurement was carried out in compliance with UNI EN 848-3:2007, UNI EN ISO 3746: 2009 (sound power) and UNI EN ISO 11202: 2009 (sound pressure levels at workstation) during panel machining. The noise levels shown are emission levels and do not necessarily correspond to safe operation levels. Despite the fact that there is a relationship between emission and exposure levels, this may not be used in a reliable manner to establish whether further measures need to be taken. The factors determining the exposure level for the workforce include length of exposure, work environment characteristics, other sources of dust and noise, etc. i.e. the number of other adjoining machines and processes. At any rate, the above information will enable the operator to better evaluate dangers and risks.

MADE WITH BIESSE

BIESSE TECHNOLOGY ACCOMPANIES THE GROWTH OF STECHERT

"On these chairs sits the world" is the motto of the Stechert Group that can effectively be taken literally. What began 60 years ago as a small manufacturing company for pram mouldings, furniture doors and door locks is today one of the largest international suppliers of contract and office chairs, as well as tubular steel furniture. Moreover, since 2011 the company has a partnership with WRK GmbH, an international specialist in podiums, conference room and grandstand seating, associated with Stechert via the joint commercial company STW. For Stechert management, however, the excellent results obtained are no excuse for resting on their laurels. On the contrary, the company is investing heavily in the Trautskirchen site to make its production even more efficient and profitable. In the search for a new machinery partner, the company's management chose the Italian manufacturer Biesse. "For the project we chose machines that already had certain options and were predisposed for automation", said Roland Palm, Biesse Area Manager. An efficient production cycle was created

in which workers are able to perform at their best after only a short training period.

At the start of the production line is the panel saw "WNT 710" with one cutting line. "Because", explained skilled cabinet maker Martin Rauscher, "we want to be able to work panels of up to 5.90 metres in order to reduce waste as much as possible." Normal rectangular panels for tables or wall panels are taken directly to the "Stream" edgebander with "Air-ForceSystem" technology. The Biesse edgebander has a group that activates the laminated edging material no longer via a laser beam but using hot air to obtain the so-called "zero gap". "The quality is just as good as the laser system, if not even better: with a connection power of 7.5 kW, the cost per square metre is much lower", underlined the Biesse Area Manager.

"We want to be ready for when we mould the frame ourselves and we must therefore calibrate the panels" said Martin Rauscher, "The same is true of course for solid wood and multiplex panels, which require grinding before being

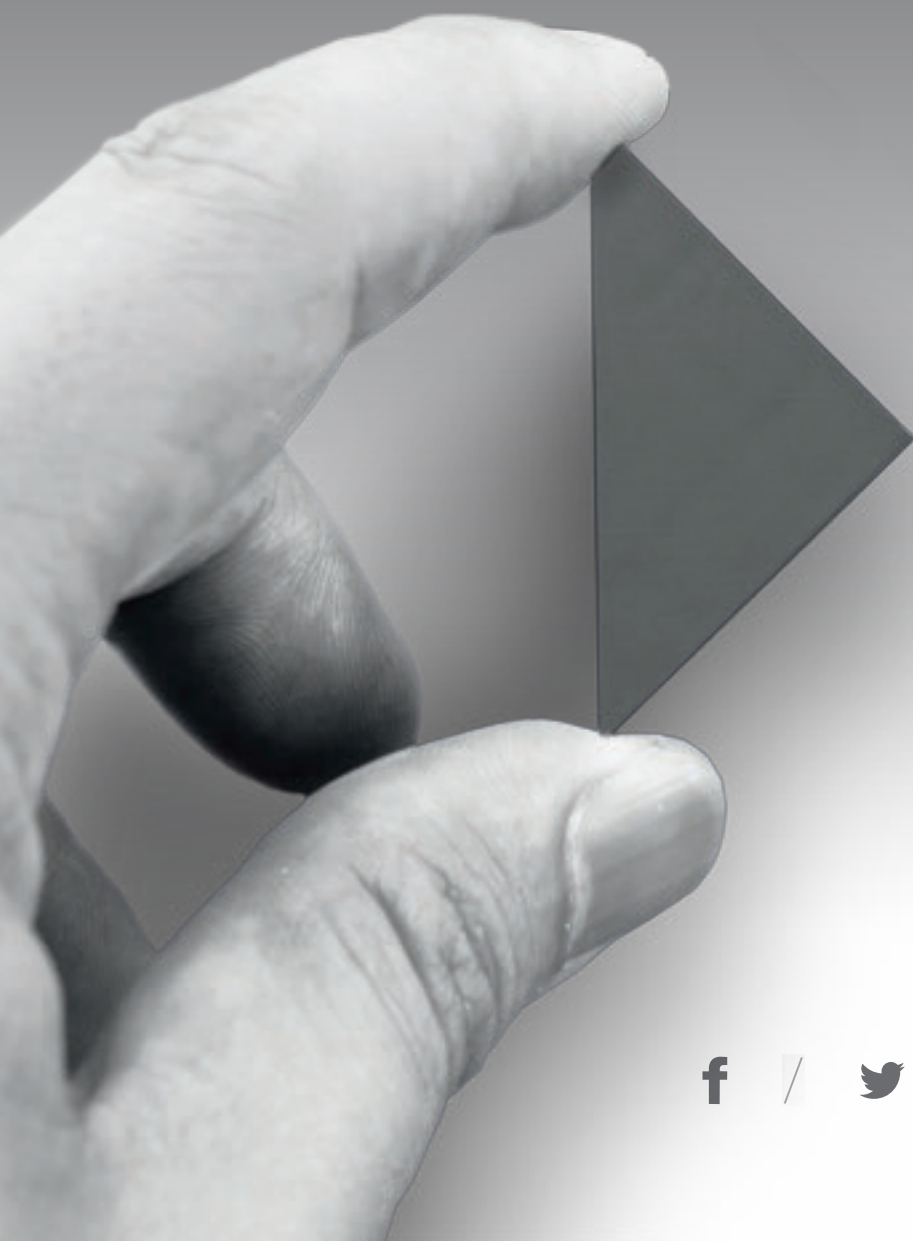
painted in an external company. For both types of work a Biesse "S1" sander is used. In order to meet the needs of the future, in the Trautskirchen plant there are also two Biesse numerically controlled machining centres: a "Rover C 965 Edge" and a "Rover A 1332 R", which are perfectly complementary.

The Stechert Group also intends to strengthen sales of innovative solutions for interior fittings, with complete systems for walls, ceilings, floors and mezzanines. For panel sectioning, the Group has purchased a "Sektor 470". For other geometry, groove and spring machining as well as boring and surface milling, there are two Biesse machining centres, an "Arrow" for nesting applications, a "Rover B 440" and more recently a 5-axis machine, the "Rover C 940 R" machining centre in order to be able to produce, in particular, wall and ceiling panels machined in 3 dimensions.

Source: HK 2/2014



LIVE THE EXPERIENC



BIESSEGROUP.COM

E



Interconnected technologies and advanced services that maximise efficiency and productivity, generating new skills to serve better our customer.

LIVE THE BIESSE GROUP EXPERIENCE AT OUR CAMPUSES ACROSS THE WORLD.

 **BIESSEGROUP**

